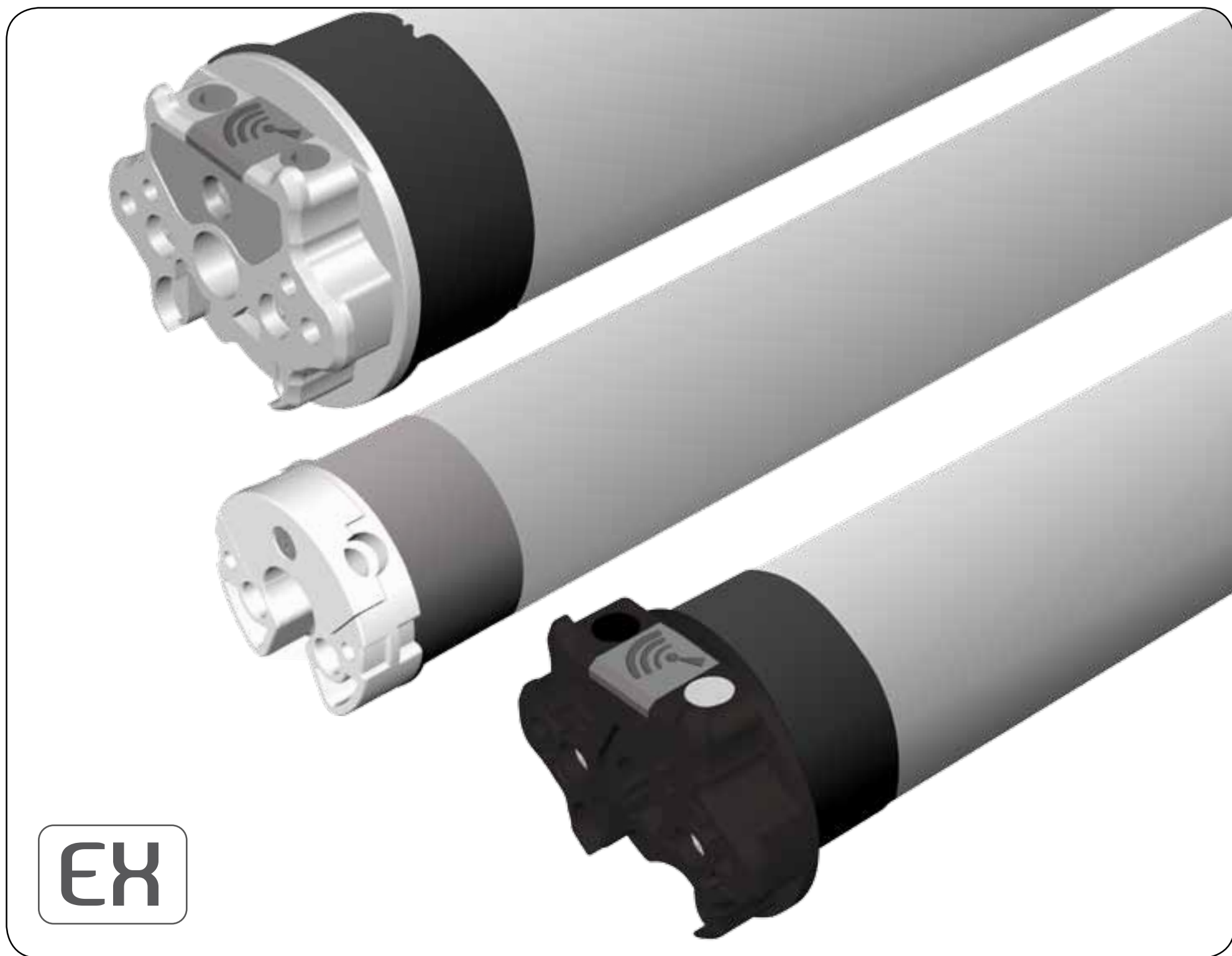




XQ Sileo XS 40 50 60

Tubular motors with encoder electronic limits and integrated receiver



Made in Italy



INDEX

SAFETY

INSTALLATION

ELECTRICAL CONNECTION

PROGRAMMING TRANSMITTER

ADDING TRANSMITTER

CHECKING/CHANGING DIRECTION

ERASING TRANSMITTER

RESET MOTOR MEMORY

LIMIT SWITCH SETUP

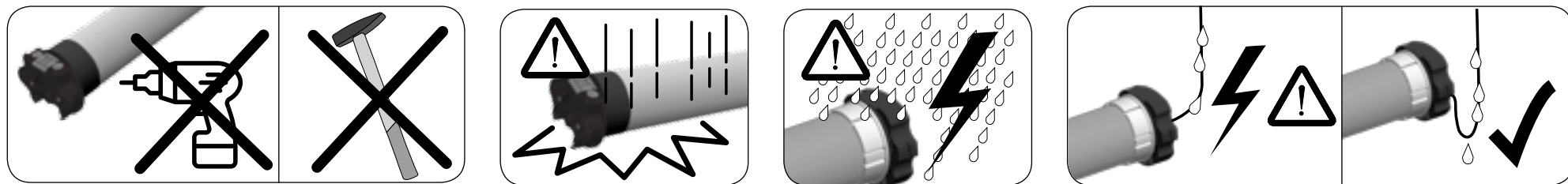
INTERMEDIATE POSITION



**CAREFULLY FOLLOW THESE INSTRUCTIONS.
IT IS VERY IMPORTANT FOR THE SAFETY OF
PERSONS.**

SAVE THESE INSTRUCTIONS. IMPORTANT:

- Check the shutter/awning in motion and keep persons far from it while in action.
- Frequently check if any loss of balance, signs of wear or damaged wires are shown.
- Do not use if any repairing or maintenance is needed.
- In case of installation in awnings keep a distance of at least 0,4 m from it (completely open) and whatever fixed item in the nearby.
- The device is not intended to be used by people (including children) whose physical, sensory or mental capabilities are reduced, or lacking experience or knowledge, unless they have been granted through the intermediary of a person responsible for their safety, supervision or instruction concerning the use of the device.
- Children should be supervised to ensure they do not play with the device and / or with fix control devices.
- The control devices installed in a fixed manner must be positioned in view.



To complete installation, the motor must be provided with a couple of adaptors (corresponding with the tube) and a fixing bracket. For a list of the available accessories, refer to the catalogue.

WARNING: incorrect installation can cause serious injuries. Follow the installation instructions. Before you remove all unnecessary cables and turn off any equipment not required for this operation.

1

Fix the adaptors to the motor distinguishing the limits ring (A) from the drive pulley (B).



2

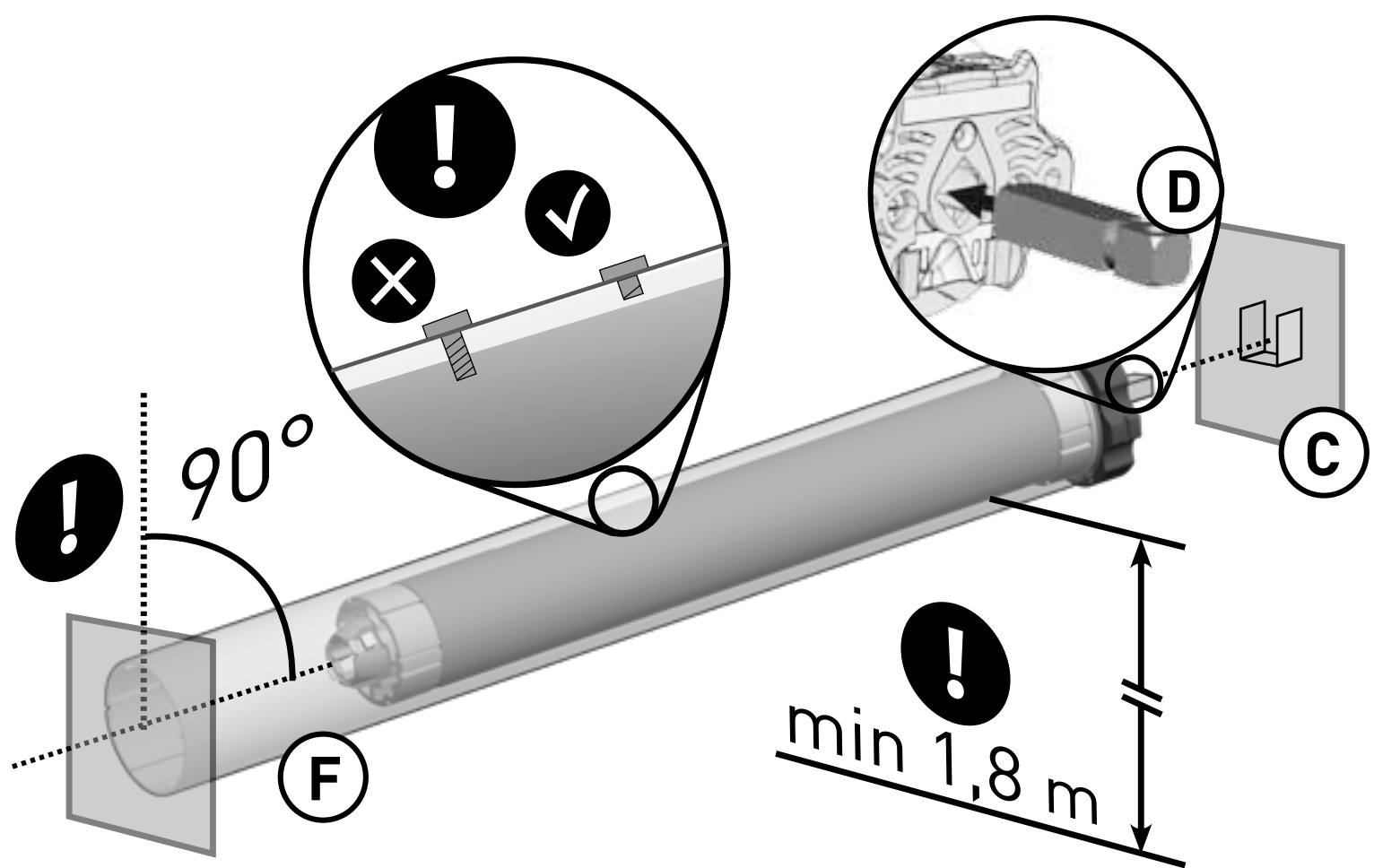
Insert the motor (E) into the tube (F) until its end stops against the limits ring.





- 3** The fixing bracket (C) must be fixed inside the box or on the awning frame so that the roller tube (F) is perfectly horizontal and at a height not less than 1,8m.

- 4** **[FOR XQ50]** Place the motor square pin (D) on the bracket (C) and the cap at the opposite end of the tube on the fixing plate.
WARNING: Never hit on the head of the motor (D) when you insert it into the tube.



NOTES

- For the XQ50, with torque up to 15Nm, the minimum tube diameter is 50x1,5mm; for motors with higher torques, the minimum tube diameter is 60x1,5mm.
- For the XQ60, the minimum tube diameter is 63x1,5mm.

WARNING:

- The screws used to fix the last slat on the tube may be too long and reach the tubular part of the motor. Use appropriate screws or fixing clips.
- Motor moving parts installed under 2,5m from the ground must be protected.
- A wrong motor installation can damage persons or objects.

ELECTRICAL CONNECTION

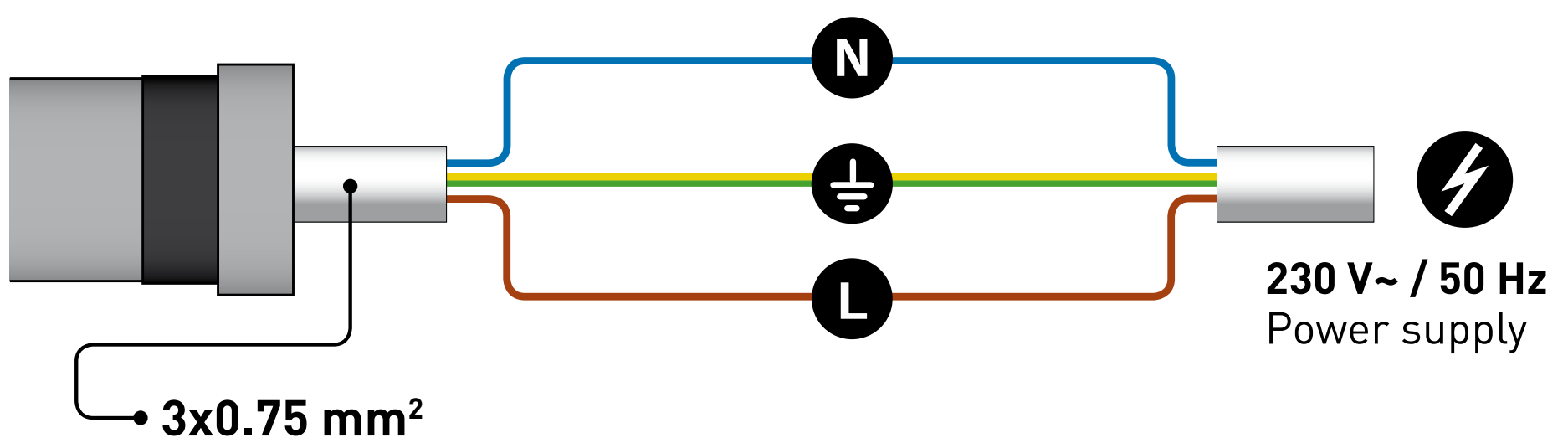


Check that the mains voltage available on the system is as shown on the label. The motor mains connection should be executed according to the diagram on the next page, by qualified technicians able to operate in compliance with the rules.

ATTENTION: The power supply must contemplate a switching device with an opening distance between contacts of at least 3mm.

The motors connecting cables to the network can only be replaced with cables of the same type provided by the motor manufacturer.

- Do not connect more than one tubular motor to a single switch.
- Do not set the shutter/awning into motion while you are cleaning or servicing the device and disconnect the supply.
- The switch controlling the motor must be installed in full view, not higher than 1,5m and it must be kept far from moving parts.



N Neutral	Blue
⏏ Ground	Yellow/Green
L Phase	Brown

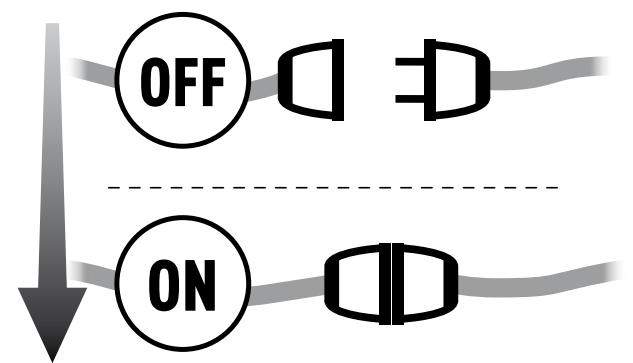


PROGRAMMING TRANSMITTER

CAUTION: If more motors with receiver have to be installed, it is important to power up **only one motor at time** during the first programming session, in order to avoid any interferences with others.

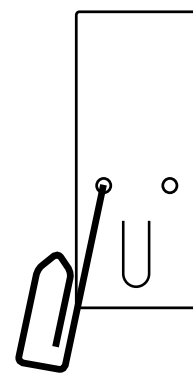
1

Power up the motor to be programmed.



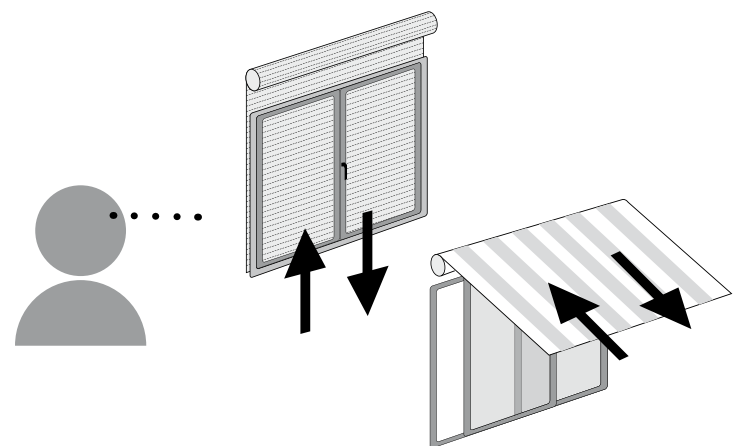
2

Press and hold the PROG-TX button until the motor starts moving.



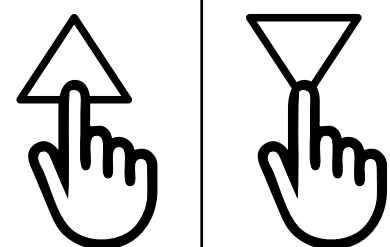
3

Check the rotation of the motor, then release PROG-TX (the motor stops).



4

Within 5 seconds press the corresponding button (i.e. UP if the motor rotates upwards or DOWN if vice versa).
The transmitter has been programmed and the rotation of the motor has been synchronized.

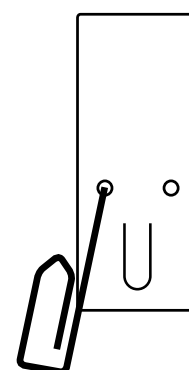




ADDING TRANSMITTER

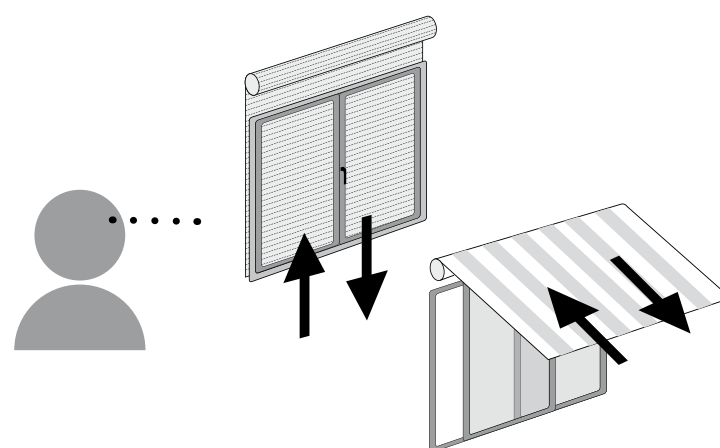
1

Press and Hold the PROG-TX button of a transmitter **already paired** until the motor starts moving.



2

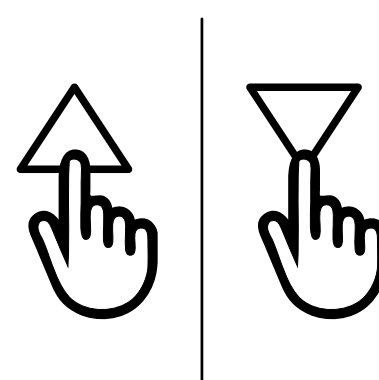
Check the rotation of the motor, then release the PROG-TX button (the motor stops).



3

Within 5 seconds press the corresponding button (i.e. UP if the motor rotates upwards or DOWN if vice versa) on the **new transmitter being added**.

The new transmitter has been programmed and the rotation of the motor has been synchronized.





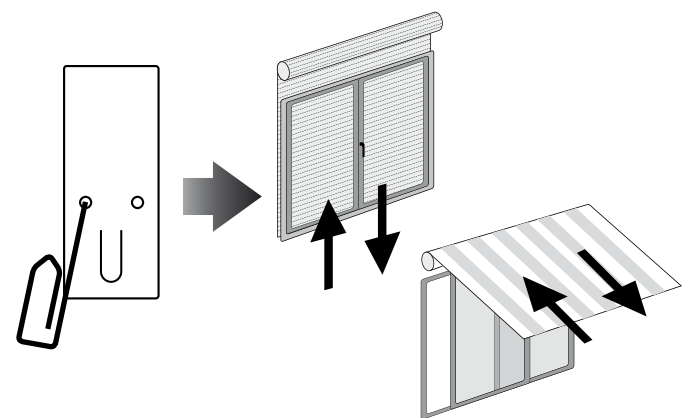
CHECKING/CHANGING DIRECTION

IMPORTANT: change direction must be performed before starting limit setting otherwise limits must be reset.

Press UP or DOWN the motor should go UP or DOWN, otherwise to change direction:

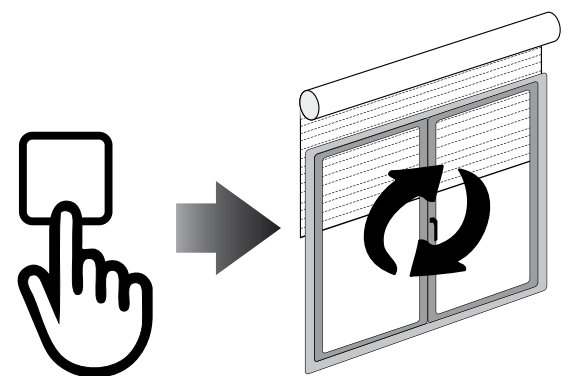
1

Press and hold the PROG-TX button until the motor starts moving



2

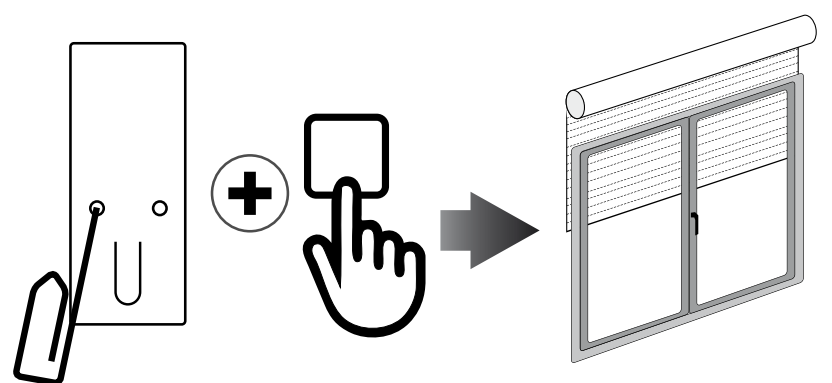
Press STOP: The motor makes a brief jog. Direction of the motor has been reversed.



ERASING TRANSMITTER

Push simultaneously the PROG-TX button and STOP of the transmitter until the motor makes a brief movement in both directions.

Only the transmitter used for this procedure has been deleted from motor memory.

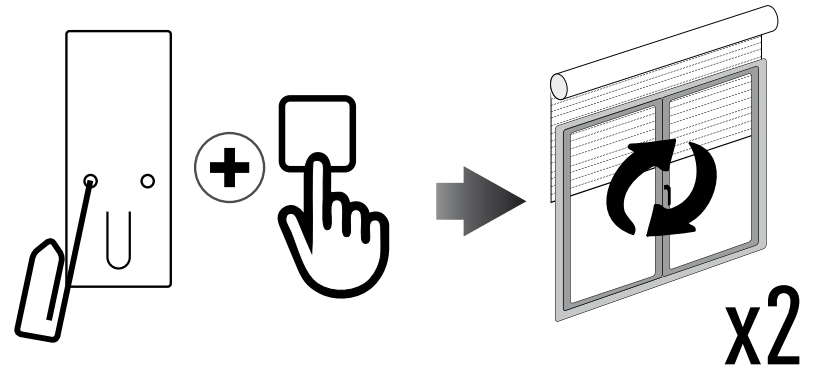




RESET MOTOR MEMORY

OPTION 1 - Using an already programmed transmitter

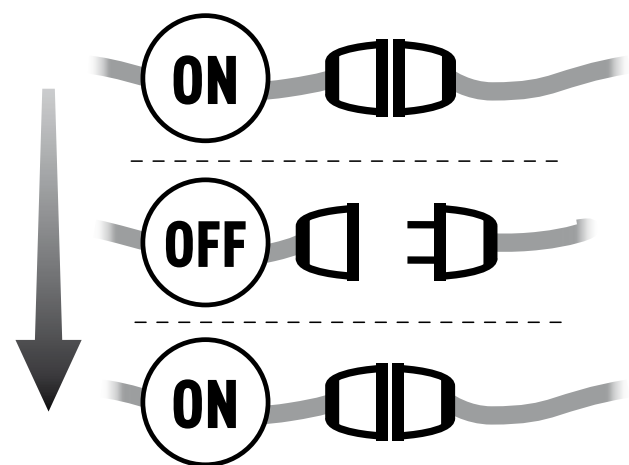
Press and hold both the PROG-TX and STOP buttons until the motor makes first a brief jog and, after a while, a second, long jog. Memory is now empty.



OPTION 2 - Without an already programmed transmitter

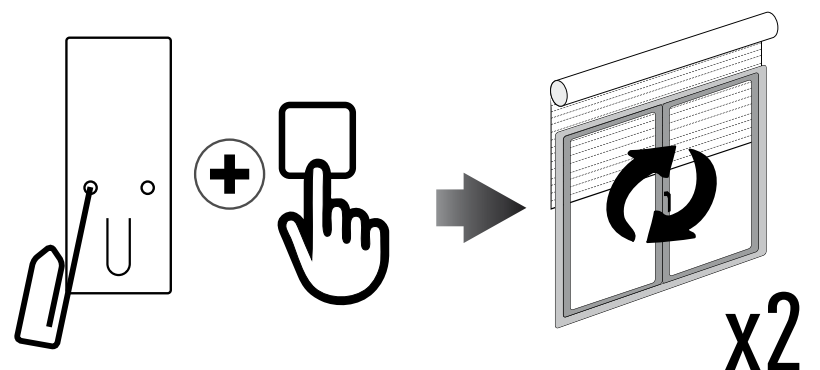
1

Switch the motor power supply OFF. Then switch it ON.



2

Within 8 seconds, using any Gaposá transmitter, press and hold both the PROG-TX and STOP buttons until the motor makes first a brief jog and, after a while, a second, long jog. Memory is now empty.



LIMIT SWITCH

1/2



LIMIT SWITCH SETUP (Just for motors with electronic limit switch)

ATTENTION: ALWAYS SET THE UP LIMIT FIRST

1	<p>Push the PROG-FC button until the motor makes a brief jog.</p> <p>Note: during “programming mode” the operations are in “deadman control”</p>	
2	<p>Press and hold the UP button and run the motor to the desired UP limit position.</p>	
3	<p>Press STOP to set the UP limit position. The motor makes a brief jog.</p>	
4	<p>Press and hold the DOWN button and run the motor to the desired DOWN limit position.</p>	
5	<p>Press STOP to set the DOWN limit position. The motor makes a brief jog.</p>	

Note: accurate limit setting can be performed when UPWARD or DOWNWARD by pressing the PROG-FC button a second time. The motor then moves slowly in steps towards the desired limit. Always press STOP button to set the limit position.



AUTOMATIC SETTING OF THE LIMITS

For limits set with torque sensor (mechanical stop of shutters or cassette awnings/shades), press and hold UP button until the bottom bar hits the cassette or shutter box.

A short jog will indicate that the UP position has been memorized. The same procedure can be followed for DOWN limit but only for roller shutters.

INTERMEDIATE POSITION

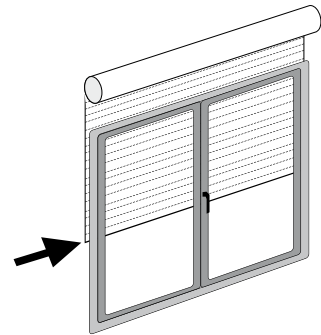


INTERMEDIATE POSITION SETUP

(Just for motors with electronic limit switch)

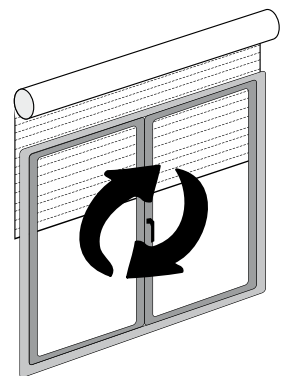
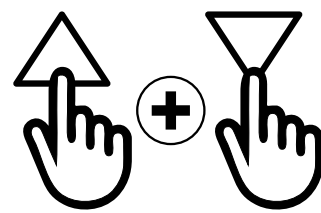
1

Stop the shutter/awning in the desired intermediate position.



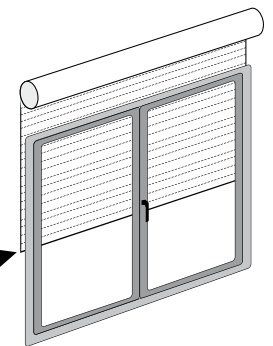
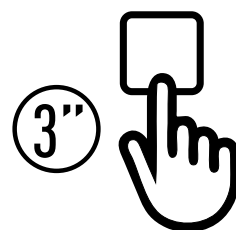
2

Press simultaneously the UP and DOWN buttons until the motor makes a brief movement in both directions.
The intermediate position has been setup.



RECALLING THE INTERMEDIATE POSITION

Keep the STOP button pressed at least for at least 3 seconds.



ERASING THE INTERMEDIATE POSITION

Press simultaneously, both the UP and DOWN buttons until the motor makes a brief movement in both directions.

